

The purpose of the JSNA is to analyse the current and future health and wellbeing needs of the local population, to inform the commissioning of health, wellbeing and social care services. The JSNA aims to establish a shared, evidence based consensus on the key local priorities across health and social care.

JSNA Programme Update

The current JSNA has delivered significant benefit to the county, providing both a broad evidence base and bank of specific needs assessments based upon priority themes. The current work programme, approved by the Health & Wellbeing Board in 2015, is now complete and the most recent outputs are shared here.

More recently, there have been increasing numbers of enquiries into the Insight Service, where the WCC capacity for delivering the JSNA work programme sits, to understand need on a place basis rather than focus on themes. Reflecting this emerging requirement, along with supporting significant transformation programmes across health and social care, it is timely to refresh Warwickshire's approach to the JSNA.

Warwickshire's eleven JSNA priorities for 2015 - 2018 were grouped under five themes:

-  Vulnerable Young People
-  Mental Wellbeing
-  Long-term Conditions
-  Physical Wellbeing
-  Carers

2017 Onwards

Moves to...



A
Place-Based
Approach

Place-Based Approach Drivers

Health & Wellbeing Strategy	The JSNA provides the evidence base for the Strategy and a placed based approach supports the strategy's three headline priorities: Promoting independence, community resilience and working together as a system.
Sustainability & Transformation Plan (STP)	A place-based JSNA will provide the evidence base for the delivery of services at a local level (circa 30 - 50k population), in support of the Proactive and Preventative workstream of the STP.
Out of Hospital Programme	The programme is led by the Clinical Commissioning Groups and is seeking to specifically build integrated services around 15-20 communities of approx. 50,000 population. This has led to the production of a first wave of place-based profiles.
GP Five Year Forward View	Based upon the provision of Primary Care services around GP clusters.
Community Hubs	Providing a range of solutions whereby WCC and partners are able to deliver an appropriate service offer to meet all or a combination of needs from a 'hub'. The JSNA place-based approach will inform where these hubs should be located and what the service offer should be to meet specific local need.
County Council Transformation Plans	Emerging proposals for service redesign in Adult Social Care and Children's Services are based upon the management of demand through increased self-help and community capacity. Service delivery would look towards community hub models.

Moving Forward.....

The Health & Wellbeing Board have endorsed a new 'place-based' approach to the delivery of the JSNA. The next programme of work will focus on understanding need on a geographical basis. This is in line with the requirement to inform the Proactive & Preventative element of the Sustainability & Transformation Plan and the out of hospital programme, which seeks to build integrated services around populations of around 30,000 – 50,000. Transformation programmes relating to both adult and children's services are also based on the need to understand service needs at a more local level.

The JSNA is the primary source of evidence which can support the place-based approach in a holistic and consistent way. Moving forward it will become a single shared evidence base, delivered through coordinated resource across the Insight Service and meeting multiple needs.

What are we doing next?

Work is currently underway to develop the geographical areas that will be used in this new place-based approach. Once the areas are confirmed, a profiling tool will be made available which will provide a statistical overview of each area. This will then be followed by the production of detailed needs assessments for each area, enabling Health & Wellbeing partners to commission the most appropriate services for each locality.

Key Features of the Place-Based Approach

Geographies User Group

Includes all partners with a stake in place-based service delivery e.g. Clinical Commissioning Groups, Warwickshire County Council, Districts and Boroughs, Town and Parish Councils, Healthwatch and voluntary sector representatives. The work links together the multitude of emerging work programmes that have a focus on place and delivering services locally based upon the specific needs of our communities.

Geographies Data Group

Provides the mapping expertise to create the geographic options and supply the data at the geographical levels required to support the creation of the profiles. Includes representations from partners holding the data identified by the Geographies User Group.

Data Building Block Approach

A 'data building block' approach to creating these geographies has consistently been agreed as the preferred method to determine the new areas. Using existing statistical boundaries and aggregating to a 30k-50k population level, whilst engaging with those with local knowledge to ensure community interests are served, will provide the maximum amount of data for the requested profiles and needs assessments.

Agreement on the Geographies (June 2017)

An agreement to produce a set of place-based geographies to cover Warwickshire with profiles being delivered for each of the geographies.

Profile Production (September 2017)

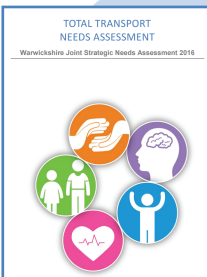
To produce a profiler tool for this geographic, focusing on a selection of key themes and indicators. This will provide HWB partners with a statistical overview of the different population needs in each area.

Needs Assessment Activity (September 2017 onwards)

To establish a programme of place-based needs assessments with timelines for delivery and an annual call for thematic needs assessments to pick up any needs assessments which are required above and beyond the place-based assessments.

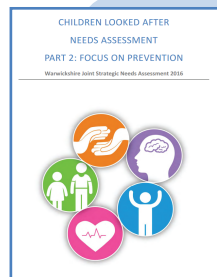


There have been a number of needs assessments which have been conducted over the past twelve months which have been aligned to the JSNA work programme. There have also been several other key reports produced which link to JSNA activity. Published documents are listed below with links included to the full reports.....



Total Transport Needs Assessment

Aims to assess available transport and health data to ascertain the non-emergency transport needs of the population. The recommendations will act as a guide for transport and health colleagues when working to improve the services that exist, to enhance patient experience and reduce journey duplications and wastage across the county.



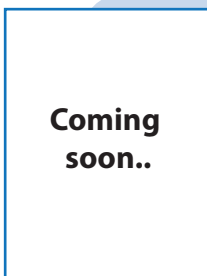
Children Looked After Needs Assessment Part 2: Focus on prevention

Aims to inform WCC's strategic planning, commissioning and service development aimed at reducing the need for children and young people to go into care. The main focus of the assessment is stage 1 – preventing entry into care in the first place.

Other Reports....

Clinical Commissioning Group (CCG) Profiles

Profiles have been created for the 3 Warwickshire CCGs to help inform areas of focus for 2017 onwards.



Self-Harm Needs Assessment

Aims to better understand the needs of young people (0-25 years) who were currently, or were at risk of, self-harm (SH) in Warwickshire.

To be published shortly.....

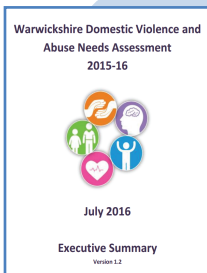


SEND Needs Assessment Special Educational Needs and Disability (SEND)

Aims to bring together a wealth of work to understand the views and needs of children and young people with special educational needs and/or disabilities. It's primary purpose is to inform commissioning at both strategic and operational levels, so that services are based on evidence.

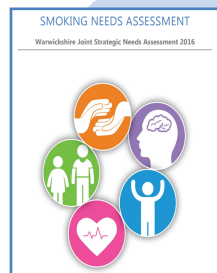
Child Poverty Profile Update

The Warwickshire profile looks at child poverty across a range of measures, including a focus on income and educational attainment.



Domestic Violence & Abuse (DVA) Needs Assessment

An in-depth analysis of the national and local picture of DVA. It aims to inform the ongoing development of Warwickshire's response to Violence Against Women and Girls (VAWG) and in particular the re-commissioning of the county's specialist DVA support services.

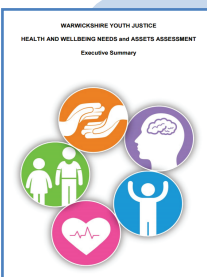


Smoking Needs Assessment

Aims to provide insight into the prevalence of smoking and tobacco use across Warwickshire and to explore the performance and equity of the local services tasked with helping people stop smoking in the county.

Rural Social Isolation

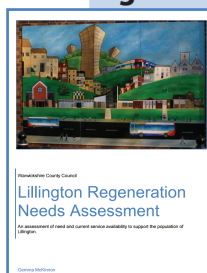
The report covers South Warwickshire and focuses on rural isolation across Stratford-on-Avon and Warwick Districts. It informs the District Council's approach to working with partner agencies towards achieving social inclusion across the rural areas of the two districts.



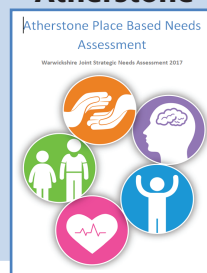
Warwickshire Youth Justice Service Health & Wellbeing Needs & Asset Assessment

Informs the re-commissioning of the health service currently provided to the Youth Offending Team. The assessment aims to quantify the identified health and wellbeing needs and assets of children and young people accessing the Youth Justice services and make recommendations to inform future health provision.

Lillington



Atherstone



Place Based Needs Assessments

The work programme to support a place based approach to needs assessments is already underway and two needs assessments have been completed.

Once the new JSNA geographies have been agreed, further needs assessments will be conducted from September 2017 onwards.